



1-713-849-5302

BUY SHEET

contact@dieselcore.com

DATE GENERATED
Sat, Apr 27, 2024 8:03 AM

2055 Discovery Hills
Parkway, Brookshire, TX
77423



**Duramax 6.6L LMM
Fuel Injector Core**

\$10 each.



**Ford 6.0L
Powerstroke Fuel
Injector Core**

\$15 each.



**Detroit Diesel N/C
Series Fuel Injector
Core**

N35, 34, 55, 60, 65, 70, etc
- any N or C Series injector
is acceptable

\$12 each.



**Detroit Diesel Series
50/60 PN 5000 and
Below Fuel Injector
Core**

\$10 each.



**Detroit Diesel Series
50/60 PN 5000 and
Above Fuel Injector
Core**

\$50 each.



**Detroit Diesel DD13 /
DD15 Fuel Injector
Core**

\$25 each.



**Detroit Diesel N3
Fuel Injector Core**

Connectors cannot be
damaged

\$50 each.



**Ford 6.9L / 7.3L
Mechanical Fuel
Injector Core**

\$2 each.



**Ford 7.3
Powerstroke AA, AB
Injector**

\$10 each.



**Ford 7.3L
Powerstroke AD Fuel
Injector Core**

\$15 each.



**Ford 7.3L
Powerstroke AE Fuel
Injector Core**

\$15 each.



**International DT466E
HEUI Fuel Injector
Core**

Code BF, BG, BI, BJ, BN,
BP

\$40 each.



**Ford 6.7L
Powerstroke Injector
Core**

Must have Gray inlet
\$2 each.



**Dodge 5.9L
Cummins Common
Rail Fuel Injector
Core**

\$15 each.



**International DT466E
/ Maxxforce DT Fuel
Injector Core**

\$15 each.



**Duramax 6.6L LB7
Fuel Injector Core**

\$10 each.



**Duramax 6.6L LLY
Fuel Injector Core**

\$30 each.



**Duramax 6.6L LBZ
Fuel Injector Core**

\$5 each.



**Duramax 6.6L LML
Fuel Injector Core**

\$2 each.



**Duramax 6.6L L5P
Fuel Injector Core**

\$20 each.



**Duramax 6.6L LGH
Fuel Injector Core**

\$25 each.



**Mack EUP Fuel
Injector Core**

Must be free of damage
\$5 each.



**Volvo D12A / D12C /
D12D Fuel Injector
Core**

Must be free of damage
\$25 each.



**Nissan Titan Diesel
Fuel Injector Core**

Must be free of damage
\$2 each.



**Dodge 6.7L
Cummins Common
Rail Fuel Injector
Core**

\$20 each.



**Detroit Diesel Series
60 DDEC VI Fuel
Injector Core**

Looking for FE4E00001 and
RFE4E00001
\$75 each.



**Cummins ISX Fuel
Injector Core**

Only Accepting Certain
Numbers, Call for Part
Numbers
\$50 each.



**Caterpillar C15 Acert
Fuel Injector Core**

Must be free of damage
\$75 each.



**Ford 6.4L
Powerstroke 2008-
2011 Injector**

\$5 each.



**Denso Common Rail
Fuel Injector Core**

No Damaged Solenoids

\$3 each.



**Caterpillar 7000
Pencil Fuel Injector
Core**

No Blown or Damaged Tips
or Heavy Corrosion

\$3 each.



**Cummins Select N14
Fuel Injector Core**

Must have good harness
and connector. See pictures
for details.

\$80 each.



**Caterpillar 3116 Fuel
Injector Core**

\$15 each.



**Caterpillar 3126 HEUI
Fuel Injector Core**

B/E Code - Top Mount

Solenoid Only

\$25 each.



**Caterpillar
3176/C10/C12 Fuel
Injector Core - See
Description**

Must have a ceramic
solenoid.

\$5 each.



**Caterpillar 3500 EUI
Fuel Injector Core**

No Damaged / Dismantled
Units

\$85 each.



**Caterpillar 3406 / C15
Fuel Injector Core**

Please Call for acceptable
part numbers.

\$75 each.



**Caterpillar C13 Fuel
Injector Core**

Must Have Undamaged
Solenoid

\$50 each.



**Caterpillar C18 Fuel
Injector Core**

No Damaged / Dismantled
Units

\$75 each.



**Cummins PTD Fuel
Injector Core**

\$1 each.



**Dodge 5.9L
Cummins
Mechanical 24 Valve
Fuel Injector Core**



**Dodge 5.9L
Cummins
Mechanical 12 Valve
Fuel Injector Core**



**Caterpillar C7 Fuel
Injector Core - See
Description**

Please call for part numbers
\$75 each.



**Cummins STC Fuel
Injector Core**

\$15 each.

Must be free of damage

\$1 each.



**Cummins STC K
Series Fuel Injector
Core**

\$15 each.

\$5 each.



**Cummins Top Stop
Fuel Injector Core**

\$1 each.



**Caterpillar/Perkins
C6/C7 Fuel Injector
Core**

No Damaged / Dismantled
Units

\$10 each.



**Caterpillar C9 Fuel
Injector Core - See
Description**

Please call for part numbers

\$100 each.



**Dodge 5.9L
Cummins CP3 Fuel
Injection Pump Core**

FCA Switch must be intact /
Front Gear Drive / Pickup
Truck Application Only

\$50 each.



**Dodge 5.9L
Cummins VP44 Fuel
Injection Pump Core**

Pump Must Spin / Not
Locked

\$200 each.



**Cummins CAPS 1
Fuel Injection Pump
Core**

\$200 each.



**Cummins ISX Fuel
Pump Core**

\$10 each.



**Cummins ISX Fuel
Rail Core**

\$50 each.



**Cummins ISX Fuel
Metering Actuator
Core**

Must be free of damage

\$10 each.



**Cummins ISX Water
Pump Core**

Must be free of damage

\$10 each.



**Cummins CAPS 2
Fuel Injection Pump
Core**

\$200 each.



**Caterpillar C7 HPOP
(High Pressure Oil)**



**Cummins 3.9L 4BT
Inline Fuel Pump**



**Dodge 5.9L
Cummins P7100 Fuel**



**Dodge 5.9L
Cummins VE Fuel**

Pump) Core

Must Have Undamaged
Plastic Connection on Top
of Pump
\$200 each.



Caterpillar 3126 HPOP (High Pressure Oil Pump) Core

\$40 each.

Core

Must be free of damage
\$200 each.



Caterpillar C9 HPOP (High Pressure Oil Pump) Core

Must Have Undamaged
Plastic Connection on Top
of Pump
\$200 each.

Injection Pump Core

5.9L Dodge Truck
application only
\$350 each.



Chevy 6.5L Mechanical Injection Pump Core

Pump Must Spin / Not
Locked
\$25 each.

Injection Pump Core

5.9L Dodge Truck
application only
\$200 each.



Ford 7.3L Stanadyne Injection DB2 Pump

\$20 each.



Ford 6.9L Stanadyne Injection DB2 Pump

\$10 each.



Cummins / Duramax Fuel Control Actuator (FCA) Core

Must be free of damage
\$2 each.



Dodge 6.7L Cummins CP3 Fuel Injection Pump Core

FCA Switch must be intact /
Front Gear Drive / Pickup
Truck Application Only
\$50 each.



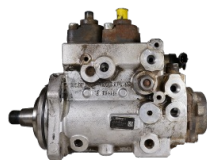
Duramax 6.6L LBZ / LMM CP3 Fuel Injection Pump Core

FCA switch must be intact
\$150 each.



Detroit Diesel Series 50/60 Water Pump Core

Must be free of damage
\$10 each.



International Maxxforce 11/13 Fuel Injection Pump Core

\$150 each.



AMBAC Model 100 Fuel Pump Core

Must be free of damage
\$30 each.



John Deere Common Rail Fuel Pump Core

Must be free of damage
\$25 each.



**Duramax 6.6L L5P
Fuel Pump Core**

Must be free of damage
\$10 each.



**Duramax 6.6L LLY
CP3 Fuel Injection
Pump Core**

Must Be complete and Free
of Damage
\$150 each.



**Detroit Diesel Series
50/60 Fuel Pump
Core**

\$10 each.



**Chevrolet 6.5L
Stanadyne Injection
Pump Core**

Pump Must Spin / Not
Locked
\$75 each.



**Duramax 6.6L LB7
CP3 Fuel Injection
Pump Core**

FCA switch must be intact
\$150 each.



**International
Maxxforce DT / 9 / 10
Cast Iron HPOP
(High Pressure Oil
Pump) Core**

Must have IPR
\$50 each.



**Ford 6.4L
Powerstroke High
Pressure Fuel Pump
Core**

Cannot have any plug or
harness damage
\$50 each.



**Ford 6.0L
Powerstroke Cast
Iron HPOP (High
Pressure Oil Pump)
Core**

Must have IPR
\$85 each.



**Ford 6.0L
Powerstroke
Aluminum HPOP
(High Pressure Oil
Pump) Core**

\$180 each.



**International DT466
Aluminum HPOP
(High Pressure Oil
Pump) Core**

Must have IPR
\$75 each.



**International DT466E
Lift Pump Core**

Must be free of damage
\$10 each.



**Ford 7.3L
Powerstroke HPOP
(High Pressure Oil
Pump) Core**

Must have IPR
\$140 each.



**Detroit Diesel 60
Series VPOD Core**



**Dodge 5.9L
Cummins Two Plug**



**Detroit Diesel Series
50 / Series 60 DDEC**



**Dodge 5.9L
Cummins Single**

Must be free of damage

\$50 each.



**Caterpillar 120 Pin
ECM Core**

No Case or Connector

Damage

\$100 each.

ECM Core

Early Style (Dual Plug)

\$100 each.



**Allison TCM
(Transmission
Control Module)
Core**

P/N: 29537441, 29542725,
29542726, 29545503

\$75 each.

IV ECM Core

DDEC IV Only. No

Damaged/Dismantled Units

\$200 each.



**Dodge 6.7L
Cummins 2007-2010
ECM Core**

Early Style (Dual Plug)

\$160 each.

Plug ECM Core

Early Style

\$160 each.



**Allison WTEC II TCM
Core**

\$50 each.



**Detroit Diesel Series
50 / Series 60 DDEC
III ECM Core**

DDEC III Only. No

Damaged/Dismantled Units

\$75 each.



**Cummins Select /
Select Plus ECM
Core**

No visible damage to case
or connector - no evidence
of dismantling, missing
screws, etc

\$125 each.



**Detroit Diesel Series
50 / Series 60 DDEC
V ECM Core**

Must be free of damage to
case and connectors

\$200 each.



**Detroit Diesel Series
60 DDEC VI ECM
Core**

Must be free of damage to
case and connectors

\$25 each.



**Ford 7.3L IDM 100 /
IDM 110 (Injector
Driver Module) Core**

Must be free of damage

\$75 each.



**Ford 7.3L IDM 120
(Injector Driver
Module) Core**

IDM 120 only

\$100 each.



**Ford 7.3L
Powerstroke ECM
Core**

Only Accepting DPC

202,422,452,462,492

\$100 each.



**Dodge 6.7L
Cummins 2013-2015
ECM Core**

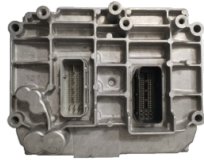
\$25 each.



**Ford Powerstroke
Instrument Cluster**

2005-2008 Diesel Only

\$25 each.



**Dodge 6.7L
Cummins 2010-2012
ECM Core**

Early Style (Dual Plug)

\$55 each.



**Ford 6.0L FICM (Fuel
Injection Control
Module) Core**

No Damaged / Dismantled
Units

\$50 each.



**Duramax 6.6L LLY
FICM (Fuel Injector
Control Module)
Core**

No Case or Connector

Damage

\$150 each.



**Duramax 6.6L LB7
FICM (Fuel Injector
Control Module)
Core**

No Case or Connector

Damage

\$50 each.



**Ford 7.3L
Powerstroke 1999.5-
2003 Turbocharger
Core**

With Pedestal. No

Dismantled Units

\$75 each.



**Ford 7.3L
Powerstroke 1998-
1999 Turbocharger
Core**

No Dismantled Units

\$25 each.



**Holset Wastegated
Turbo HX40**

No Dismantled Units

\$30 each.



**Ford 6.4L
Powerstroke
Turbocharger High
Pressure Side Core**

Must have electronics. No

Dismantled Units

\$125 each.



**Holset HE400VG
Turbocharger Core**

\$300 each.



**Cummins / Holset
HE451VE
Turbocharger Core**

No Dismantled Units

\$325 each.



**Ford 6.0L
Powerstroke
Turbocharger Core**

Must Have VGT

Sensor/Solenoid. No

Dismantled Units

\$10 each.



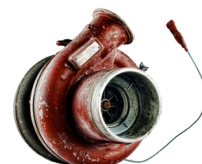
Detroit Diesel 14.0L



Detroit Diesel 12.7L



Holset HE500VG

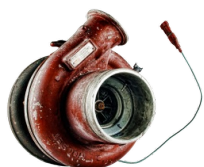


Cummins / Holset

Series 60 DAVNT

Turbocharger Core

Must be OEM no
Aftermarket Turbochargers.
No Dismantled Units
\$75 each.



Cummins / Holset HE531VE

Turbocharger Core

Must have electronics and
actuator attached and in
good condition. No
Dismantled Units.
\$250 each.



Cummins Electronic VGT Actuator Core

No Dismantled Units.
\$75 each.



Cummins / Holset HE551V Turbocharger Core

Series 60

Turbocharger Core

All 11.1L and 12.7L must be
OEM no Aftermarket
Turbochargers. No
Dismantled Units
\$75 each.



Cummins / Holset HE431VE Turbocharger Core

No Dismantled Units
\$350 each.



Holset HE300VG Industrial Turbocharger

Must have electronics and
actuator attached and in
good condition. No
Dismantled Units.
\$300 each.



Cummins / Holset HX55W Turbocharger Core

Turbocharger Core

\$300 each.



Dodge 5.9L Cummins HE341CW Turbocharger Core

No Dismantled Units.
Dodge Truck.
\$75 each.



Dodge 6.7L Cummins HE351VE / HE300VG Turbocharger Core

No Dismantled Units.
\$300 each.



Ford 6.0L Early Powerstroke Turbocharger Core

2003-2004 Models only

HE551VE / HE561VE

Turbocharger Core

Must have electronics and
actuator attached and in
good condition. No
Dismantled Units.
\$400 each.



Cummins / Holset HE341VE Turbocharger Core

No Dismantled Units
\$150 each.



Dodge 6.7L Cummins HE351VE Turbocharger Core

No Dismantled Units.
Dodge Truck
\$400 each.



International VT365 Turbocharger Core

Must Have VGT
Sensor/Solenoid. No
Dismantled Units

\$200 each.



**Ford 6.4L
Powerstroke
Turbocharger Core
Set**

Must have electronics. No
Dismantled Units

\$225 each.

\$50 each.



**Dodge 5.9L
Cummins HX35W
Turbocharger Core**

No Dismantled Units. 5.9L
Cummins Dodge Truck
Applications only

\$50 each.

\$125 each.



**Caterpillar C15 /
3406E Single
Turbocharger Core**
Pre-ACERT Single Turbo
App

\$75 each.

\$25 each.



**Caterpillar C15 /
3406E Dual
Turbocharger Set
Core**

\$200 each.



**Caterpillar C15 /
3406E Dual
Turbocharger Setup
Core - High Side**

\$100 each.



**Mack VGT
Turbocharger Core
with Electronic
Wastegate**

\$150 each.



**Duramax 6.6L LGH
Turbocharger Core**
2011+ Duramax Turbo. No
Dismantled Units

\$150 each.



**Duramax 6.6L LML
Turbocharger Core**
2011+ Duramax Turbo. No
Dismantled Units

\$150 each.



**Duramax 6.6L LMM
Turbocharger Core**
2008 - 2010 Duramax
Turbo. No Dismantled Units

\$150 each.



**Duramax 6.6L LBZ
Turbocharger Core**
2006 - 2008 Duramax
Turbo. No Dismantled Units

\$150 each.



**Duramax 6.6L LLY
Turbocharger Core**
2004 - 2005 Duramax
Turbo. No Dismantled Units

\$150 each.



**Duramax 6.6L LB7
Turbocharger Core**
Chevy / GMC Duramax
6.6L LB7 Turbo

\$25 each.



**International
MaxxForce DT / 9 /**



**Ford Powerstroke
6.7L 2015+**



**Ford 6.4L
Powerstroke Low**



**Dodge 5.9L
Cummins HE351CW**

**10 Turbocharger
Core**

2005 and up. Must have
electronic actuator and be
free of damage.

\$125 each.



**Cummins 6.7 EGR
Cooler**

\$1 each.



**International DT466E
EGR Cooler Core**

Must be free of damage

\$5 each.



**International
MaxxForce 9/10
Exhaust Side EGR
Cooler Core**

2008 and up. No damage or
Cut Parts.

\$10 each.

Turbocharger Core

No Dismantled Units

\$75 each.



Ford 6.4 EGR Cooler

\$1 each.



**Cummins ISX / ISM /
ISL EGR Cooler Core**

2nd Generation Only with
Long Mounting Flange

\$15 each.



**International
MaxxForce 9/10
Intake Side EGR
Cooler Core**

2008 and up. No damage or
Cut Parts.

\$10 each.

**Pressure
Turbocharger Core**

No Dismantled Units

\$25 each.



**GM Duramax EGR
Cooler**

All Models

\$1 each.



**Ford 6.0L Early
(Round) EGR Cooler
Core**

Must be free of Dents and
Damage

\$1 each.



**Cummins Bendix
TuFlo 550 / 750 Air
Compressor Core**

\$100 each.

Turbocharger Core

No Dismantled Units. 5.9L

Cummins Dodge Truck

Applications only

\$75 each.



**Detroit Diesel EGR
Valve Core**

\$40 each.



**Ford 6.0L
Powerstroke Late
(Square) EGR Cooler
Core**

Must be free of damage

\$1 each.



**Bendix AD-IP Air
Dryer Core**

\$20 each.



Bendix AD-IS Air Dryer Core

\$20 each.



Caterpillar Bendix TuFlo 550 / 750 Air Compressor Core

\$100 each.



International Bendix Belt Driven TuFlo 550 / 750 Air Compressor Core

Must be free of damage
\$100 each.



International Bendix TuFlo 550 / 750 Air Compressor Core

\$100 each.



Mack Bendix TuFlo 550 / 750 Air Compressor Core

\$100 each.



Detroit Diesel Bendix TuFlo 550 / 750 Air Compressor Core

\$100 each.



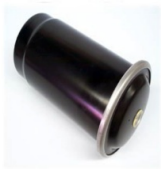
Cummins ISX Wabco Air Compressor Core

\$15 each.



Bendix BA-921 Air Compressor Core

\$75 each.



Bendix Air Dryer Cartridge Core

Must be Bendix
\$1 each.



Delco Remy 41MT Starter Core

Must be 12V starter
\$40 each.



Delco Remy 42MT Starter Core

Must be 12V starter
\$6 each.



Delco Remy 38MT Starter Core

Must be 12V starter
\$5 each.



Delco Remy 25SI Alternator Core

Must be a Delco Remy alternator
\$8 each.



Delco Remy 26SI Alternator Core

Must be a Delco Remy alternator
\$8 each.



Delco Remy 35SI Alternator Core

Must be a Delco Remy alternator
\$15 each.



Delco Remy 36SI Alternator Core

Must be a Delco Remy alternator
\$15 each.



**Sheppard M100
Steering Gear**

\$25 each.



TRW Steering Gears

\$25 each.



**Borg Warner Fan
Clutch Core**

Must be complete

\$25 each.



**Horton Fan Clutch
Core**

Must be complete

\$60 each.



**Caterpillar C12
Engine Core**

Must be complete

Call for price



**Ford 7.3L Mid
Powerstroke Engine
Core**

Must be complete

Call for price



**Caterpillar 3126B/
3126E Engine Core**

Must be complete

Call for price



**Caterpillar 3116
Mechanical Engine
Core**

Must be complete

Call for price



**Mercedes Benz
OM926 / OM906
Engine Core**

Must be complete

Call for price



**Mercedes Benz
OM924 / OM904
Engine Core**

Must be complete

Call for price



**International Late
Maxxforce 7 Engine
Core**

Must be complete

Call for price



**International Early
Maxxforce 7 Engine
Core**

Must be complete

Call for price



**International
Maxxforce 13 Engine
Core**

Must be complete

Call for price



**International
Maxxforce 11 Engine
Core**

Must be complete

Call for price



**International VT275
Engine Core**

Must be complete

Call for price



**International DT466
12 Valve w/o EGR
Engine Core**

Must be complete

Call for price



**International DT466E
w/EGR Engine Core**

Must be complete

Call for price



**Ford 6.9L / 7.3L IDI
Engine Core**

Must be complete

Call for price



**Ford 7.3L Late
Powerstroke Engine
Core**

Must be complete

Call for price



**Caterpillar C13
Engine Core**

Must be complete

Call for price



**Caterpillar C15 Acert
Engine Core**

Must be complete

Call for price



**Cummins 8.3L ISC
w/CAPS 1 Pump
Engine Core**

Must be complete

Call for price



**Caterpillar C15
Engine Core**

Must be complete

Call for price



**Caterpillar C7 Engine
Core**

Must be complete

Call for price



**Caterpillar C9 Engine
Core**

Must be complete

Call for price



**Cummins 10.8L ISM
Engine Core**

Must be complete

Call for price



**Dodge 5.9L
Cummins Common
Rail Engine Core**

Must be complete

Call for price



**Dodge 5.9L
Cummins 12 Valve
w/P7100 Pump
Engine Core**

Must be complete

Call for price



**Dodge 5.9L
Cummins 12 Valve
w/VE Pump Engine
Core**

Must be complete

Call for price



**Dodge 5.9L
Cummins 24 Valve
53 Block w/VP44
Pump Engine Core**

Must be complete

Call for price



**Dodge 5.9L
Cummins 24 Valve
w/VP44 Pump
Engine Core**

Must be complete

Call for price



**Dodge 6.7L
Cummins Engine
Core**

Must be complete

Call for price



Cummins 6.7L Rear Gear Engine Core

Must be complete

Call for price



Cummins 8.3L ISC w/CAPS 2 Pump Engine Core

Must be complete

Call for price



Ford 6.4L Powerstroke Long Block Engine Core

Must be complete

Call for price



Cummins ISX Engine Core

Must be complete

Call for price



Cummins Select M11 Engine Core

Must be complete

Call for price



Cummins Select N14 Engine Core

Must be complete

Call for price



Detroit Diesel Series 60 DDEC III/IV Engine Core

Must be complete and
Serial number must be
250000 or above

Call for price



Detroit Diesel 14L Series 60 Engine Core

Must be complete

Call for price



Detroit Diesel DD15 EPA 07+ Engine Core

Must be complete

Call for price



Duramax 6.6L LB7 Engine Core

Must be complete

Call for price



Duramax 6.6L LBZ/LMM Engine Core

Must be complete

Call for price



Duramax 6.6L LLY Engine Core

Must be complete

Call for price



Duramax 6.6L LML/LGH Engine Core

Must be complete



Ford 6.4L Powerstroke Engine Core

Must be complete



Ford 6.7L Powerstroke Engine Core

Must be complete

Call for price

1-713-849-5302

Call for price

contact@dieselcore.com

Call for price

2055 Discovery Hills Parkway, Brookshire, TX 77423